

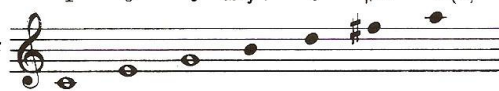
Rotina de Estudos

Técnica para SAXOFONE

Dó Maior (C)

C Major

1 3 5 Maj 7 9 #11 13(6)

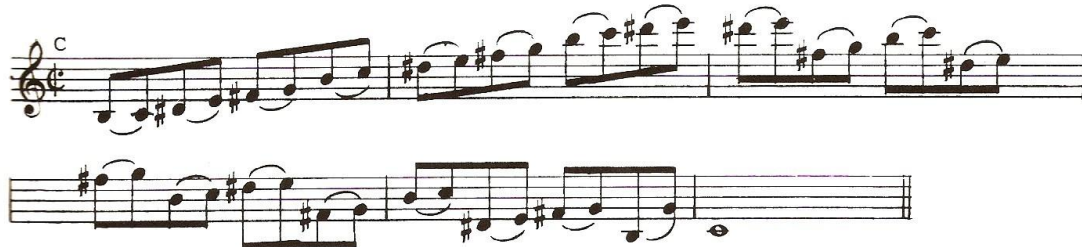


A musical staff showing the C Major scale with notes C, D, E, F, G, A, B, C. The notes are labeled with their respective scale degrees: 1, 3, 5, Maj 7, 9, #11, 13(6).



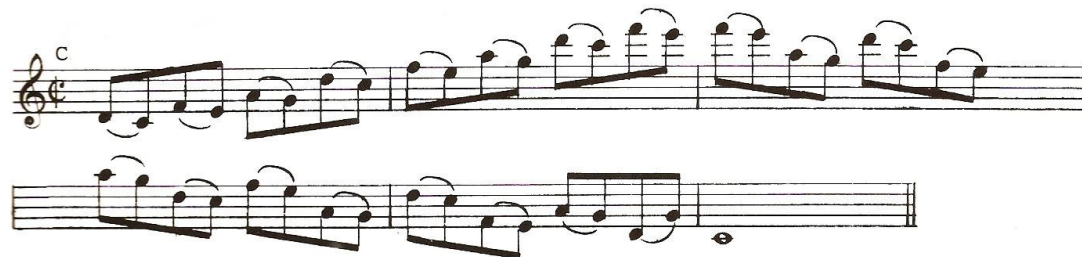
A musical staff containing a sequence of notes: C, D, E, F, G, A, B, C, D, E, F, G, A, B, C.

1



A musical staff with a treble clef and a common time signature 'C'. It contains a sequence of notes with slurs and accents, starting with C and ending with C.

2

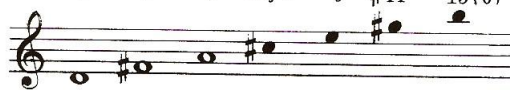


A musical staff with a treble clef and a common time signature 'C'. It contains a sequence of notes with slurs and accents, starting with C and ending with C.

Ré Major (D)

D Major

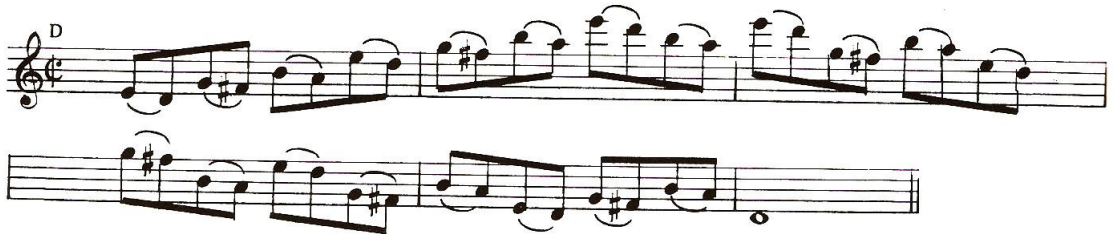
1 3 5 Maj 7 9 #11 13(6)

A musical staff showing the D Major scale in treble clef. The notes are D, E, F#, G, A, B, C#, D. The notes are labeled with their respective scale degrees: 1, 3, 5, Maj 7, 9, #11, and 13(6).A single musical staff showing a continuous eighth-note run of the D Major scale: D, E, F#, G, A, B, C#, D, E, F#, G, A, B, C#, D.

1

A musical staff showing a continuous eighth-note run of the D Major scale, divided into two lines. The first line contains the notes D, E, F#, G, A, B, C#, D. The second line contains the notes E, F#, G, A, B, C#, D. Slurs are placed over each eighth note.

2

A musical staff showing a continuous eighth-note run of the D Major scale, divided into two lines. The first line contains the notes D, E, F#, G, A, B, C#, D. The second line contains the notes E, F#, G, A, B, C#, D. Slurs are placed over each eighth note.


3

A musical staff showing a continuous eighth-note run of the D Major scale, divided into three lines. The first line contains the notes D, E, F#, G, A, B, C#, D. The second line contains the notes E, F#, G, A, B, C#, D. The third line contains the notes E, F#, G, A, B, C#, D. Slurs and triplet markings (the number 3) are placed over each eighth note.

Mi Maior (E)

1 3 5 Maj 7 9 #11 13(6)

E Major

A musical staff showing the E Major scale in treble clef. The notes are E, F#, G, A, B, C#, D, E. The 13th degree is marked as 13(6), indicating a 6th fret on the 13th string.A single staff showing a continuous run of the E Major scale notes: E, F#, G, A, B, C#, D, E, F#, G, A, B, C#, D, E.

1

A musical exercise labeled "1" in E major. It consists of two staves. The first staff contains a sequence of eighth notes: E, F#, G, A, B, C#, D, E, F#, G, A, B, C#, D, E. The second staff contains a sequence of eighth notes: F#, G, A, B, C#, D, E, F#, G, A, B, C#, D, E, F#, G, A, B, C#, D, E.

2


A musical exercise labeled "2" in E major. It consists of two staves. The first staff contains a sequence of eighth notes: E, F#, G, A, B, C#, D, E, F#, G, A, B, C#, D, E. The second staff contains a sequence of eighth notes: F#, G, A, B, C#, D, E, F#, G, A, B, C#, D, E, F#, G, A, B, C#, D, E.

3

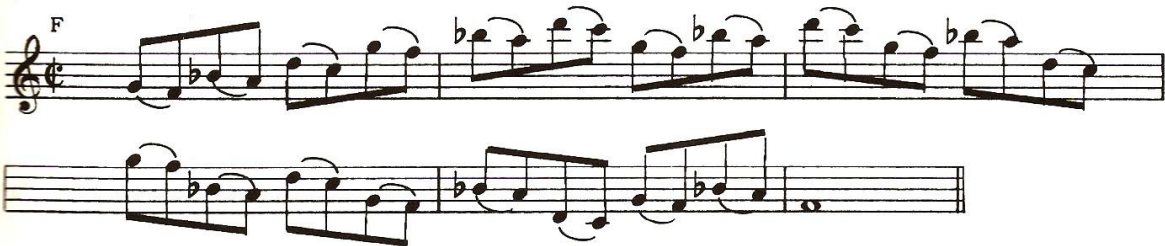
A musical exercise labeled "3" in E major. It consists of two staves. The first staff contains a sequence of eighth notes: E, F#, G, A, B, C#, D, E, F#, G, A, B, C#, D, E. The second staff contains a sequence of eighth notes: F#, G, A, B, C#, D, E, F#, G, A, B, C#, D, E, F#, G, A, B, C#, D, E.

Fá Maior (F)

F Major 1 3 5 Maj 7 9 #11 13 (6)



F Major



Sol Maior (G)

G Major

1 3 5 Maj 7 9 #11 13(6)



A musical staff showing the G Major scale notes: G, A, B, C#, D, E, F#, G. The notes are placed on a five-line staff with a treble clef. The notes are: G (first line), A (first space), B (second line), C# (second space), D (third line), E (third space), F# (fourth line), G (fourth space).




1



A musical staff with a treble clef and a G major key signature. It contains a sequence of eighth notes with slurs and accents, starting on G and moving up and down the scale.

2



A musical staff with a treble clef and a G major key signature. It contains a sequence of eighth notes with slurs and accents, starting on G and moving up and down the scale.

3



A musical staff with a treble clef and a G major key signature. It contains a sequence of eighth notes with slurs and accents, starting on G and moving up and down the scale. This staff includes triplets, indicated by a '3' above the notes.

Lá Maior (A)

A Major

1 3 5 Maj 7 9 #11 13(6)

A musical staff showing the A Major scale with notes A, B, C, D, E, F#, G, A. The notes are labeled with their respective scale degrees: 1, 3, 5, Maj 7, 9, #11, and 13(6).A musical staff showing a scale run starting on A, moving up and then down through the A Major scale.

1

A musical staff with two lines of notation. The first line starts with a treble clef, a common time signature, and a key signature of one sharp (F#). It contains a sequence of eighth notes with slurs. The second line continues the sequence.

2

A musical staff with two lines of notation. The first line starts with a treble clef, a common time signature, and a key signature of one sharp (F#). It contains a sequence of eighth notes with slurs. The second line continues the sequence.

3

A musical staff with three lines of notation. The first line starts with a treble clef, a common time signature, and a key signature of one sharp (F#). It contains a sequence of eighth notes with slurs and triplets. The second and third lines continue the sequence.

Si Maior (B)

B Major

1 3 5 Maj 7 9 #11 13(6)



Musical notation for the B Major scale in treble clef, showing the notes: B2, C#3, D4, E4, F#4, G4, A4, B4, C#5, D5, E5, F#5, G5, A5, B5.



Musical notation for the B Major scale in treble clef, showing the notes: B2, C#3, D4, E4, F#4, G4, A4, B4, C#5, D5, E5, F#5, G5, A5, B5.

1



Musical notation for exercise 1, featuring a B Major scale in treble clef with slurs and accents, and a corresponding bass line.

2



Musical notation for exercise 2, featuring a B Major scale in treble clef with slurs and accents, and a corresponding bass line.

3



Musical notation for exercise 3, featuring a B Major scale in treble clef with slurs and accents, and a corresponding bass line. The exercise includes triplets and slurs.